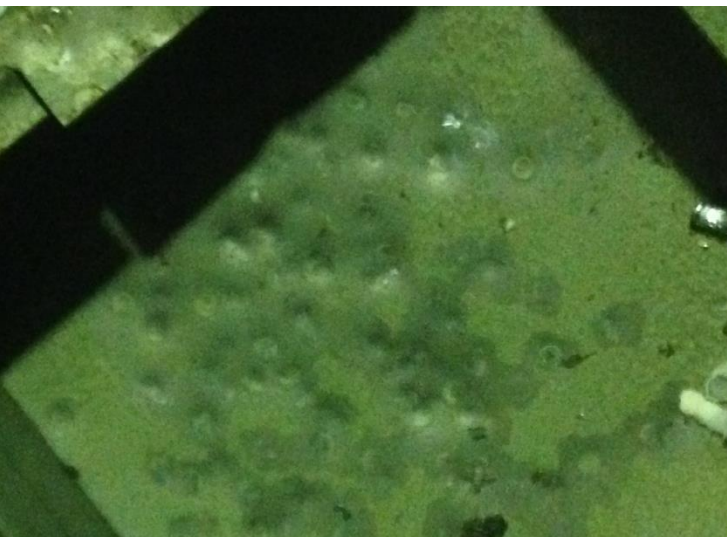




I ride a bike and drag a sled. When I brake the bike the sled continued. Sled can not stop because the sled's mass continued trip and stop when friction stop it.



I shoot an air gun to metal box. Bullet hit it and change the bullet shape. Bullet try to go over the metal but the box is harder than the bullet so it go flattened. Upper bullet is before shooting and lower bullet is after shooting.



I pull tablecloth underneath the cups with bike. Tablecloth is knotted to bike. I cycle ten meters trip to gain full speed. Tablecloth come underneath the cups. I use plastic cups because I was not sure about the final result. I weigh one glass cup and put plastic cups to pile so one plastic pile weights enough much than one glass.